

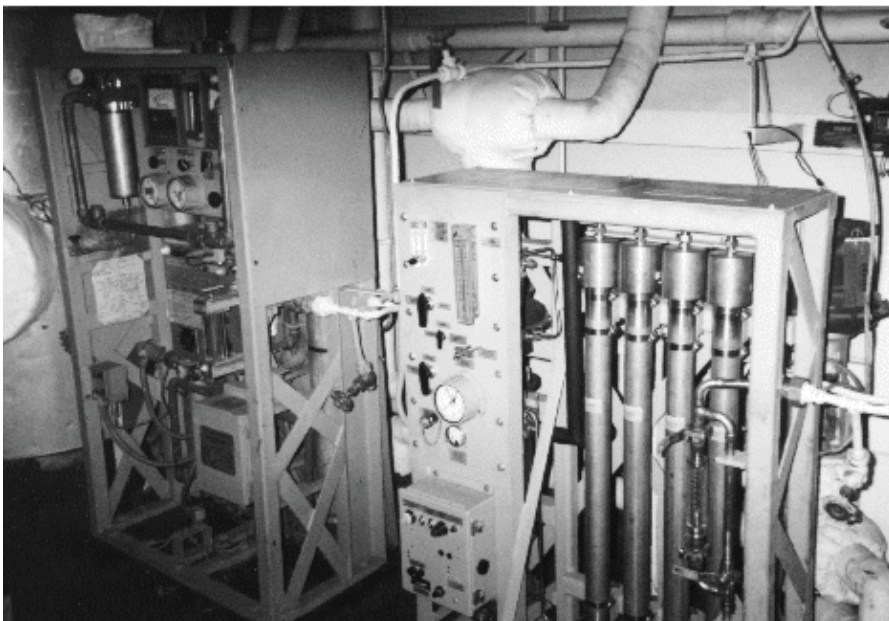
## Model 6995 Membrane Dehydrator Installation in Place of Model 4737 Desiccant Dehydrator

### Installation Instructions

1. Remove the existing Model 4737 type II dehydrator.
2. Drop in the Model 6995 membrane dehydrator.  
The base footprint, air inlet and outlet, and drain connection are all identical to the 4737's.
3. Connect 115 VAC to the electrical panel terminals. Installation is complete.

### Simplified Operating Instructions

1. Close all three of the main flow-meter ball valves.
2. Check the alignment of the valves on the instrument panel. Make sure that all three are pointed up.
3. Switch AC power on. The power-on lamp should light. The humidity alarm lamp will probably light.
4. Open the inlet air shutoff valve, external to the unit. Make sure that air pressure is between 80 and 150 psig.
5. Check purge flow. It should be between 15 and 18 scfm (Marks I and IA) or 16 to 20 scfm (Mark II). Troubleshoot per the Technical Manual if purge flow is not within specs.
6. Check the calibration flowmeter to be sure its valve is closed.
7. Let the unit operate with purge flow only until the humidity alarm shuts off. This may take up to an hour or so, depending on how long the unit has set since last use.
8. After the humidity alarm goes off, open the flow-meter isolation valves. Make sure that flow does not exceed 30 scfm.



**Aboard USS Yorktown (CG48)**  
**4737 at left, 6995 at right - smaller, lighter, more dependable,**

## Howell Laboratories, Inc.

188 Harrison Rd.  
Bridgton, Maine 04009  
(207) 647-3327

(888) 744-8359

FAX (207) 647-8273

e-mail: [contracts@howelllabs.com](mailto:contracts@howelllabs.com)  
An Employee-Owned Company

web: [www.howelllabs.com](http://www.howelllabs.com)  
Certified to ISO 9001:2000